



LARRY HOGAN
Governor

BOYD K. RUTHERFORD
Lt. Governor

KENNETH C. HOLT
Secretary

ELLINGTON CHURCHILL, JR.
Deputy Secretary

June 29, 2016

Jessica Barnes, Town Clerk
Town of Riverdale Park
5008 Queensbury Road
Riverdale Park, MD 20737

Dear Ms. Barnes,

It is a pleasure to inform you that the application for a **Sustainable Community** Designation for Greater Riverdale-Town of Riverdale Park has been approved by the Smart Growth Subcabinet and will be effective for five years beginning May 13, 2015.


As a result of this new designation, the Town and other stakeholders will be eligible to apply for the following resources from the Department of Housing and Community Development (The Department) to revitalize and attract growth and development within the Sustainable Community:

- **Community Legacy Program** – This program provides local governments and community development organizations with funding for essential projects aimed at strengthening communities through activities such as business retention and attraction, encouraging homeownership and commercial revitalization.
- **Strategic Demolition Fund** – The Strategic Demolition Fund is seeking to catalyze activities that accelerate economic development, job production and smart growth in existing Maryland communities. Funds can be used for capital predevelopment activities, such as, property acquisition, site development, demolition and construction-level architectural engineering designs.

Current Sustainable Community boundaries and information regarding other state programs and incentives available to Sustainable Communities can be found on the Department's website at <http://dhcd.maryland.gov/Pages/default.aspx>.

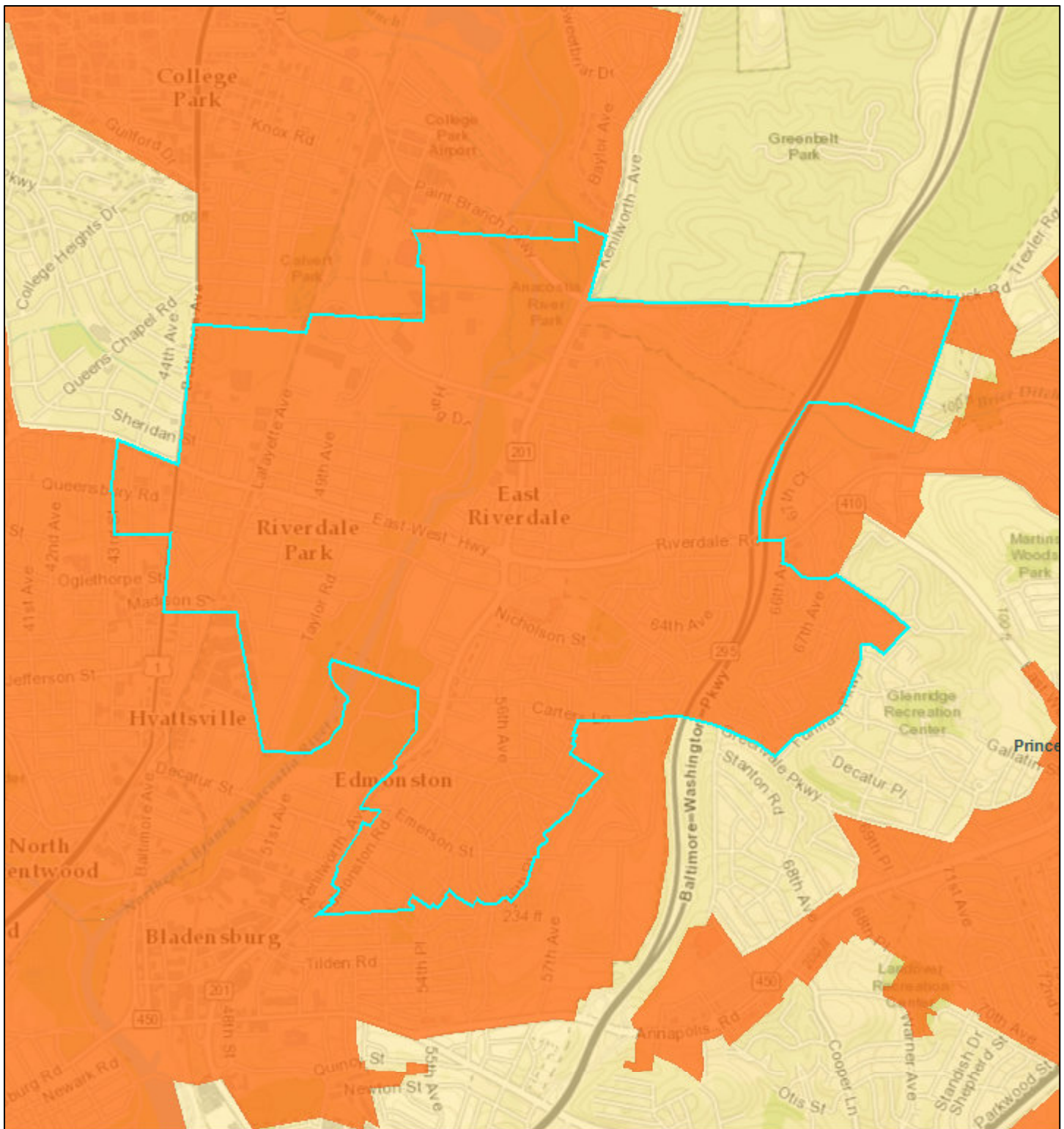
Should you have any questions regarding the Sustainable Communities designation, please contact Ms. Mary Kendall at 410-209-5810 or Mary.Kendall@maryland.gov. Again, congratulations on your application. Best wishes for success with your future revitalization efforts.

Sincerely,


Kevin N. Baynes, AICP
Director of Community Programs
Division of Neighborhood Revitalization



Greater Riverdale-Sustainable Communities

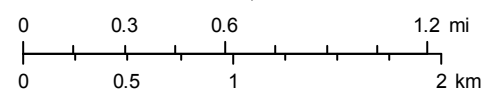


June 21, 2016

County Boundary

Sustainable Communities

1:36,112



Sources: Esri, HERE, DeLorme, Intermap, increment P Corp., GEBCO, USGS, FAO, NPS, NRCAN, GeoBase, IGN, Kadaster NL, Ordnance Survey, Esri Japan, METI, Esri China (Hong Kong), swisstopo, MapmyIndia, © OpenStreetMap contributors, and the GIS User Community